

MARCOTHERM QUADRO PU

Code QPUxxxSPXX

DESCRIPTION



MARCOTHERM QUADRO PU are rigid polyurethane foam mounting blocks, without CFCs, that are not subject to decay. They are available in two different sizes.

Dimensions

- Dimensions: 198 x 198 / 238 x 138 mm
- Useful surface: 198 x 198 / 238 x 138 mm
- Thickness: 60 – 300 mm
- Specific weight: 200 kg/m³

APPLICATION

The MTH QUADRO PU mounting blocks are especially suitable as support blocks for high compression loads on surfaces composed of expanded polystyrene (EPS) or mineral wool (MW).

They can be covered with commercially available plasters without requiring pre-painting. Since the rigid polyurethane foam is fragile and can support only 200 kg/m, anchoring to the masonry is required. Fastening to

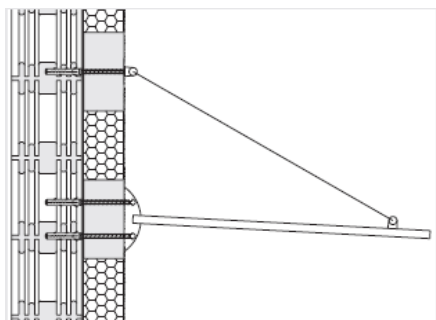
the MTH QUADRO PU mounting blocks alone is not sufficient.

The MTH QUADRO PU mounting blocks have a limited resistance to UV rays but protection for the duration of the construction is not fundamental.

The mounting blocks can be used as support blocks, for example for canopy roofs, sun shades and awnings.

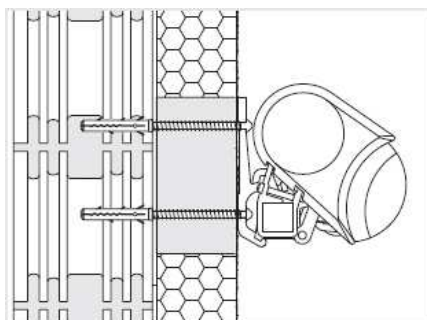
Canopy roofs

Anchoring of external source elements to walls with toggle bolts or with the hydraulic method. This application creates a thermal bridge.



Large size sun shades and awnings

Anchoring of external source elements to walls with toggle bolts or with the hydraulic method. This application creates a thermal bridge.



MARCOTHERM QUADRO PU

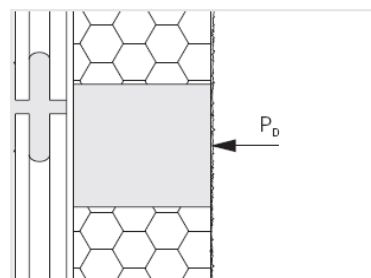
Code QPUxxxSPXX

TECHICAL INFORMATION

Thermal conductivity certificate: 0.04 W/mK
DIN 4102, May 1998: Class B2 fire rating

Allowable compression stress P_D
over the entire surface of the block

198 x 198 mm: 25.0 kN 2500 kg
238 x 138 mm: 21.0 kN 2100 kg



MOUNTING

It is recommended that MARCOTHERM QUADRO PU mounting blocks be installed at the same time the insulation panels are applied.



Apply adhesive mortar to the surface of the MTH QUADRO PU mounting block to be attached. The element must be completely covered over the entire surface of the base.

Consumption for each MTH QUADRO PU mounting block applying a layer with a thickness of 5 mm

198 x 198 mm: 0.25 kg

238 x 138 mm: 0.21 kg



Press the MTH QUADRO PU mounting blocks until they are flush with the insulation panels.



Colorificio San Marco Spa – Via Alta 10 – 30020 Marcon (VE) – Tel +39 041 4569322 – Fax +39 041 5950153 – info@san-marco.it

san marco
SISTEMI VERNICIANTI PER L'EDILIZIA

MARCOTHERM QUADRO PU

Code QPUxxxSPXX

FINISHING WORK

The MTH QUADRO PU mounting blocks should be used exclusively as support blocks. Fastening to the MTH QUADRO PU mounting blocks alone is not sufficient. San Marco cannot be held responsible if fastening is into the MTH QUADRO PU mounting blocks alone.

Determine the exact position of the MTH QUADRO PU mounting blocks by tapping on the plaster coat.

Make the hole for the support through the thermal insulation system until reaching the masonry.

Fasten the object to be mounted to the masonry with the fastening bolts.

To avoid leaving indentations on the MTH QUADRO PU mounting blocks, tightened joints should be used on the support surface for the elements to be mounted.

Alternatively, a pressure distribution plate can be used. This should be done to prevent the infiltration of water into the thermal insulation system.



COLORIFICIO SAN MARCO guarantees that the information herein is provided to the best of its technical and scientific knowledge and based on its experience; nonetheless, the company may not be held liable for the results obtained using these products, as application conditions are beyond its control. It is recommended to always make sure that the product is suited to each specific instance. The present sheet voids and replaces any previously existing sheets. For further technical information call the technical service +39 041 4569322.

Colorificio San Marco Spa – Via Alta 10 – 30020 Marcon (VE) – Tel +39 041 4569322 – Fax +39 041 5950153 – info@san-marco.it

san marco
SISTEMI VERNICIANTI PER L'EDILIZIA